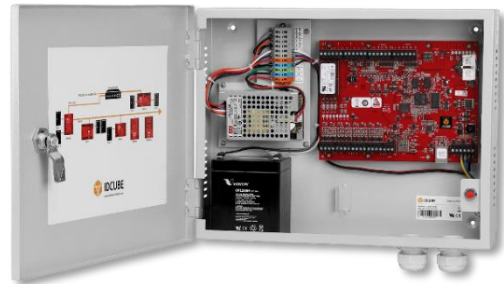
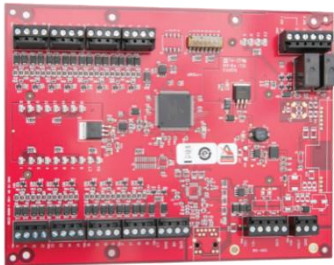




Access Input Interface Panel (MMR) ICMMR-16IN



Reference image only*

The IDCUBE's new MMR Series Serial Input / Output (SIO) panels enable system expansion of MLP series intelligent controllers as part of its distributed architecture. The enhanced modules offer an improved processor and increased memory, plus feature an embedded crypto memory chip that provides a secured layer of encryption to onboard sensitive data.

The ICMMR-16IN panel comprises of an Authentic Mercury MR Series Intelligent input interface MR-16IN along with optional accessories, i.e., UL certified power supply, charging circuit, battery and a tamper switch.

ICMMR-16IN supports 16 general-purpose input circuits. The circuits can be individually set for sensitivity ranges, timing parameters (normally-open or normally-closed operations) and end-offline resistance values. They can also be declared supervised and non-supervised. Two programmable relay outputs are configurable for fail-safe or fail secure operation, supporting "On," "Off," "Pulse" and "Repeating Pulse" commands. The ICMMR-16IN can be used for a variety of applications, including status annunciation and alarm monitoring applications such as lighting, heating/cooling, door and elevator control. Devices can also be activated by the condition of selected system devices, either locally or regionally, without host intervention.

KEY FEATURES

- 16 programmable inputs; 2 programmable relay outputs
- AES 128/256-bit data encryption for optimal data protection
- UL 294 recognized, CE compliant, FCC, RoHS
- Initiates commands by operator, by time schedules, or by events
- Allows for easy and compact clustering of up to 16 uniquely monitored devices
- RS-485 host connectivity
- Configurable input parameters
- Two programmable Form C relay outputs
- Embedded crypto memory chip provides secured layer of encryption to protect sensitive data
- The high performance and reliable hardware seamlessly integrates with IDCUBE's Access 360 and INEST applications

*The panel image illustrates component assembly and may not represent the actual controller board

APPLICATION NOTES

The IDCUBE's ICMMR-16IN is an essential component that supports IDCUBE's flexible, building-block approach to access control system design.

The ICMMR-16IN provides the capacity to link, control and respond to an array of sensors. With its RS-485 connectivity, the ICMMR-16IN can be clustered or distributed to best suit each installation environment.

TECHNICAL SPECIFICATIONS

Characteristic	Parameter
Primary Power	12-24 Vdc +/- 10%, 350mA maximum
Host Communication	RS-485, 2-wire, 4,000' (twisted pair with shield, Belden 9841)
Inputs	16 General Purpose: Programmable circuit type 2 Dedicated: Tamper and Power Monitor
Output Relays	Two Form-C Relays: Normally open contact (NO): 5A @ 30 Vdc resistive Normally closed contact (NC): 3A @ 30 Vdc resistive
Dimensions	6.0" W x 8.0" L x 1.0" H (152mm W x 203mm L x 25mm H)
Temperature	0-70 °C operational, -55-85 °C storage
Humidity	5 to 95% RHNC
Standards	UL 294 recognized, CE compliant, RoHS, FCC Part 15 Subpart B
Part Code	ICMMR-16IN-EXXXXXX ¹ (Mercury Controller Part number: MR16IN)

¹ EXXXXXX refers to enclosure type along with accessories such as power supply, charging circuit, battery, and tamper switch; Please refer enclosure datasheet for details

For more information:
www.idcubesystems.com

IDCUBE Identification Systems Pvt. Ltd.
B-19, Sector-2, NOIDA 201301,
UTTAR PRADESH, INDIA
+91 120 4130715
contact@idcubesystems.com

